

# FIVE ►

The following document contains a comprehensive index of FIVE's Water and Freshwater Reduction measures mapped to its operational properties as of 2023.

## Rainwater Harvesting/Irrigation Control

### FIVE Palm Jumeirah



A rainwater gauge is present to reflect the height of the adjacent 450 cubic meter rainwater collection tank (concealed behind wall).

# FIVE ►



Timer-based irrigation control system is in place

## FIVE Zurich



A 100,000 litre rainwater harvesting basin is used to collect rainwater and irrigate the property's landscaping.

# FIVE ►

## FIVE Jumeirah Village



Timer-based irrigation control panel



Rainwater catchment basin – is set to be refurbished to re-activate the existing infrastructure. Following completion of FJV Greywater system, the stormwater system will be integrated. Booster pumps (below) will pump greywater throughout the tower to feed apartment-level landscaping

# FIVE ▶



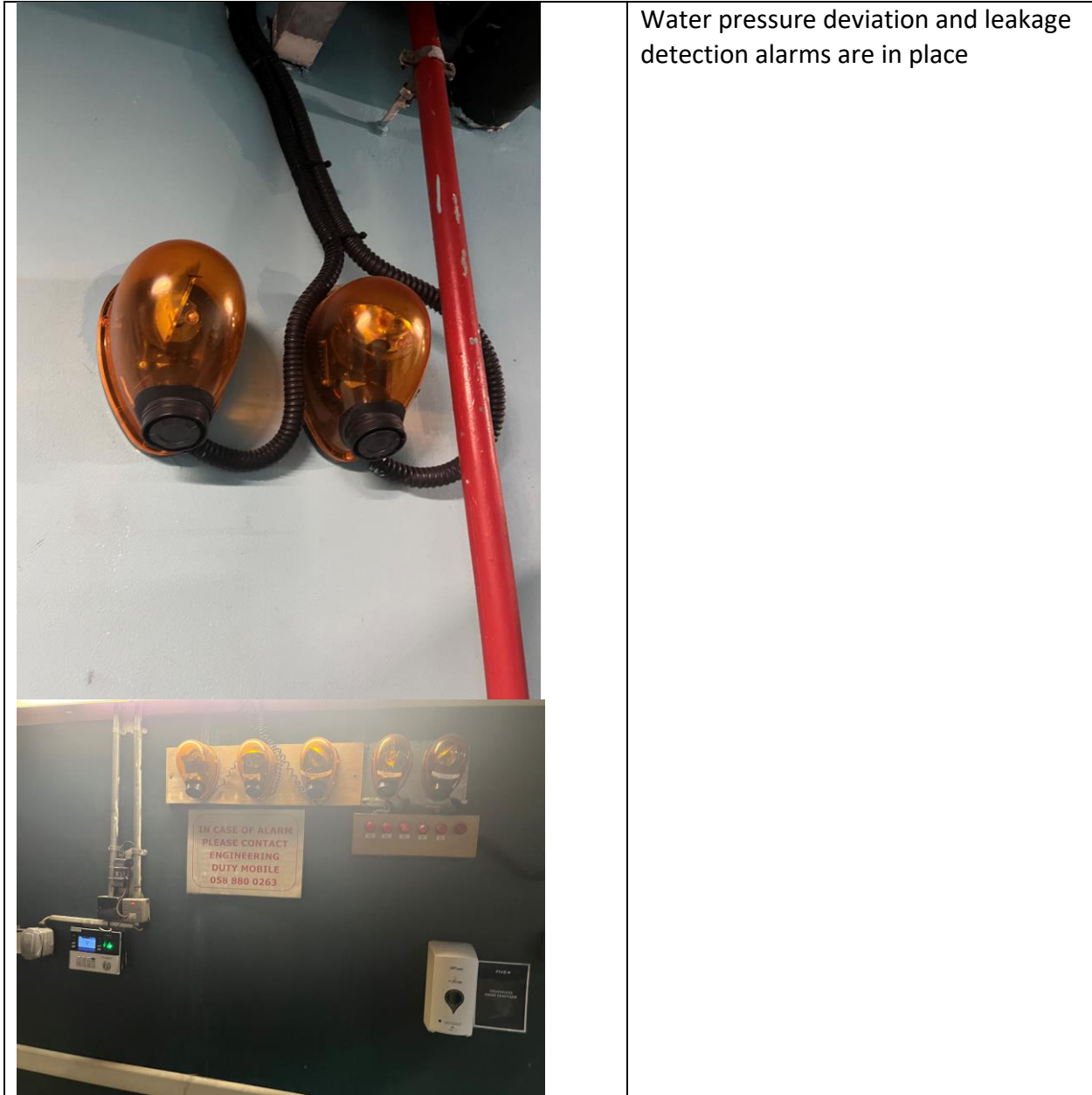
Irrigation water booster pumps in place (top) and site of future water pump (bottom) for distributing greywater to apartments landscaping.



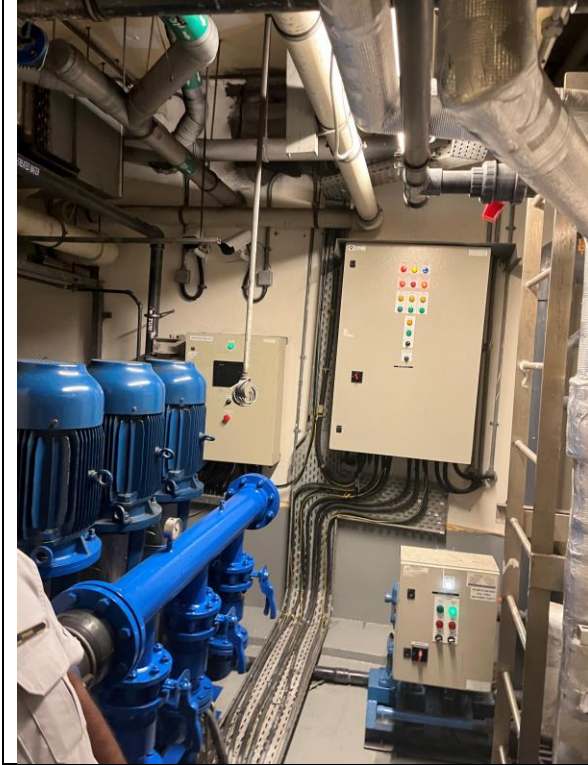
# FIVE ►

## Water Leakage Control

### FIVE Palm Jumeirah

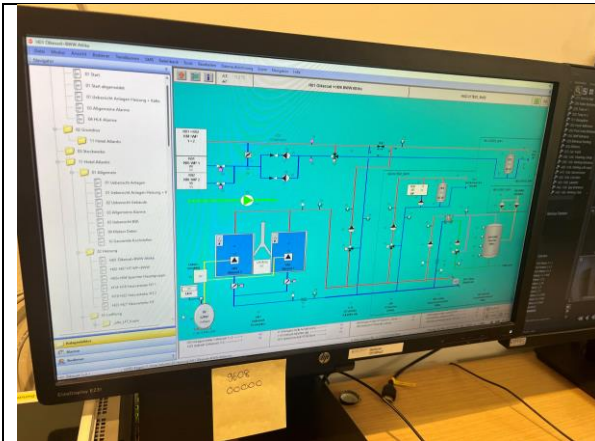


# FIVE ▶



A three-system water pump is in place; in the event of a malfunction or pressure drop due to a leakage or block, the back-up water pumps ensure the system continues working

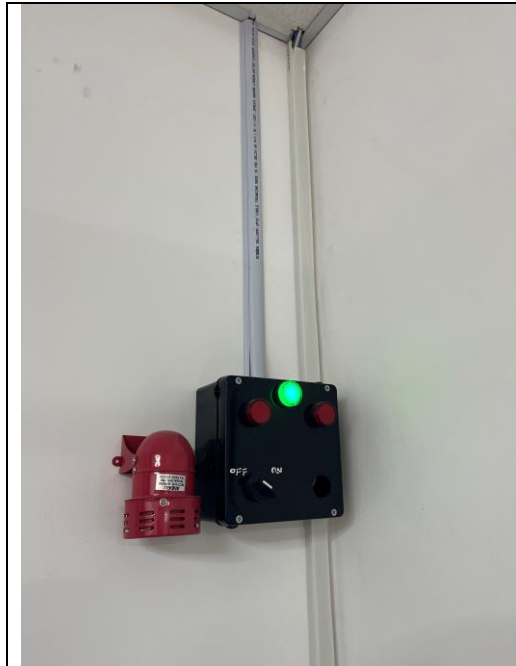
## FIVE Zurich



- FIVE Zurich's BMS system can provide alerts and data in real time on deviation in water pressure. This allows for water leakage management and control. Each wing of the hotel contains measuring devices linked to the BMS which immediately flag a reduction in pressure should a leak occur

# FIVE ▶


## FIVE Jumeirah Village

	<p>A water leakage alarm sits in Engineering command center to alert to any water pressure deviations</p>
---	---

## Water Minimization Measures

### FIVE Palm Jumeirah

Refer to FIVE's Water Management Report for documented water minimization measures

	<p>Tap aerators are fixed in faucets and shower heads to conserve water</p>
---	---

# FIVE ▶





A water bottling plant is installed in the facilities to reduce plastic consumption and to help conserve water consumption by drawing on local, desalinated source, reducing import of packaged freshwater



"Go Green" Guest Room card invites guests to conserve water and chemical use by changing linens on an as-needed basis rather than daily service




# FIVE ▶




 A photograph of an industrial facility, likely a brewery, showing a greywater system. A large blue cylindrical tank is visible on the right, and various pipes and machinery are in the background.	<p>Greywater systems reduce water consumption through recycled wastewater</p>
 A photograph of a kitchen sink with two white basins. The faucet is a motion sensor tap, and the water is not running. The background features a tiled wall with a geometric pattern.	<p>Motion sensor water taps are installed</p>

## FIVE Zurich

Refer to FIVE's Water Management Report for documented water minimization measures

 A close-up photograph of a tap aerator installed on a faucet. Water is flowing through the aerator, creating a fine, bubbly stream. The background shows a kitchen sink and countertop.	<p>Tap aerators are in place to reduce water floor</p>
---	--

# FIVE ▶

	<p>Dual flush system in place to conserve water</p>
	<p>Rain showers are equipped with aerators to reduce tap flow</p> <p>Removed Pressurized Water Pumps on the 4<sup>th</sup> Floor (top) which reduces water consumption, through reduced flow rates</p>
	<p>“Go Green” Guest Room card invites guests to conserve water and chemical use by changing linens on an as-needed basis rather than daily service</p>

# FIVE ►

FIVE Jumeirah Village



Tap aerators and flow restrictors are in place in employee wash areas and guest rooms to promote water reduction

# FIVE ▶



Utilizing glass bottles filled with local, desalinated water reduces the import of freshwater packaged sources

# FIVE ▶



Glass bottling plant in place to reduce plastic consumption and to conserve water

# FIVE ▶



Waterless urinals in the public area  
bathrooms operate without flush