

# FIVE ►

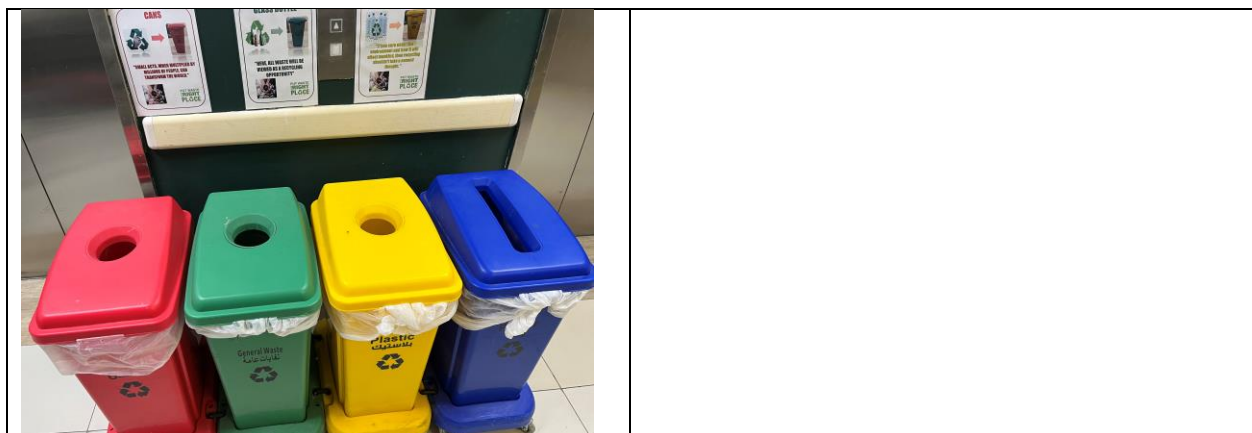
The following document contains a comprehensive index of FIVE's Waste and Wastewater Reduction measures mapped to its operational properties as of 2023.

## Waste Management and Recycling

FIVE's waste management and recycling program includes floor-level segregation bins and centralized collection cages for disposal by waste management provider. FIVE's recycling program includes paper/cardboard, plastic, glass, meta/cans, e-waste, batteries, cooking oil, grease/fat separation, hazardous paint and chemical waste, construction material, and unwanted/bulky waste.

FIVE is expanding its waste management infrastructure to include medical waste, engine oil and is conducting internal audits to ensure it tracks 100% of its waste streams.

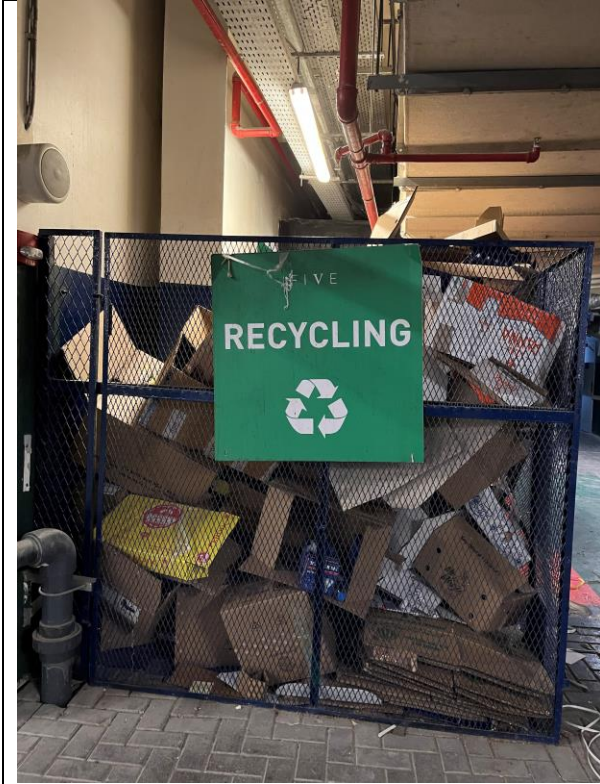
### FIVE Palm Jumeirah



# FIVE ▶



# FIVE ▶

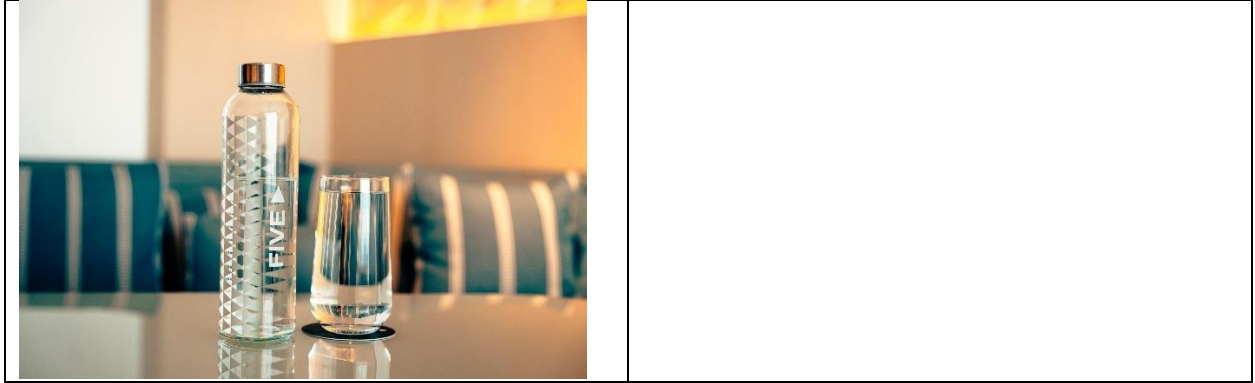


# FIVE ►



A water bottling plant is installed in the facilities to reduce plastic consumption and to help conserve water consumption

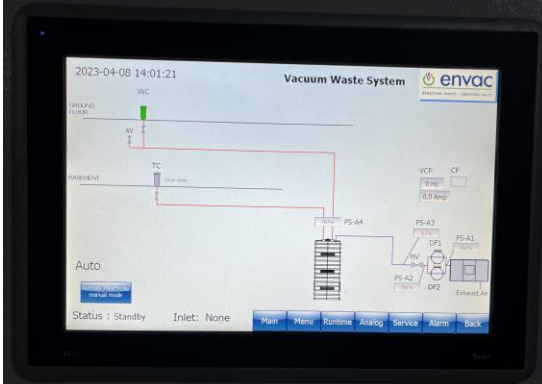
# FIVE ▶



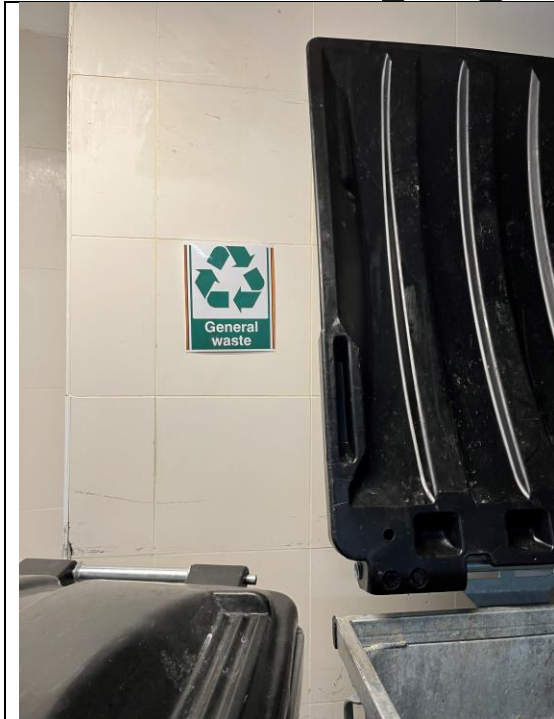
**FIVE Jumeirah Village**

# FIVE ▶

Vacuum Waste System collects general trash directly from garbage schutes.



# FIVE ▶



General Waste demarked areas for waste disposal

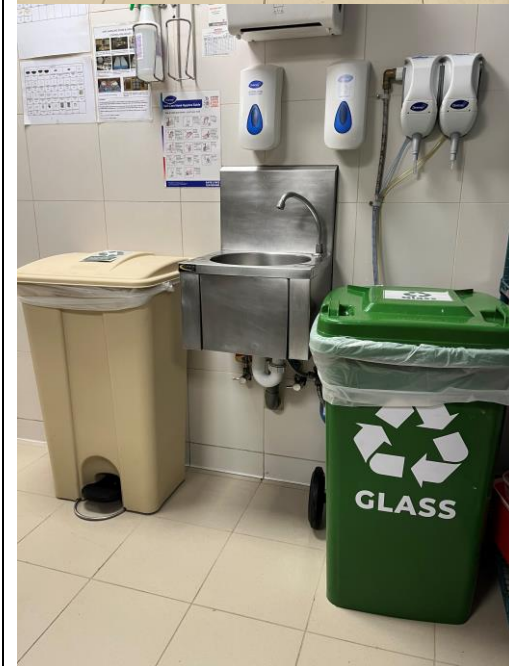


Proper cardboard recycling instructions are provided in the collection areas

# FIVE ►

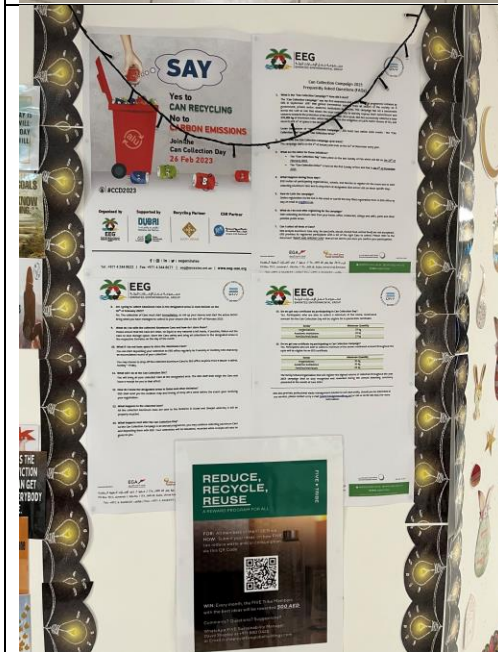


Differentiated Recycling bins are provided at source such as in kitchen to encourage segregation at source





# FIVE ►



Environmental Action Employee and Community Programs are provided in community board to promote eco-conscious culture

# FIVE ►

Litter prevention education, awareness and instruction is provided in a multilingual format for employees



# FIVE ►



Proper waste management with recycling with plastic, glass, cans, metal and food waste, cooking oil

# FIVE ►



--	--

# FIVE ▶



Cage designated recycling areas for large plastic containers and cardboard

# FIVE ▶



Glass bottling plant in place to reduce plastic consumption and to conserve water

**FIVE Zurich**

# FIVE ▶



**(Left) is Foodwaste collection drain which is collected by waste management company which produces biogas**

**(right) is the fat/grease separator output which is collected by waste management company**



**Food waste storage tank prior to drainage collection point**

# FIVE ►



**Food waste disposal system built into kitchen work station**



**Empty Glass Bottles are returned to the supplier as part of a reuse and recycling agreement**



# FIVE ▶



Cardboard compression and recycling machine is installed in waste management area

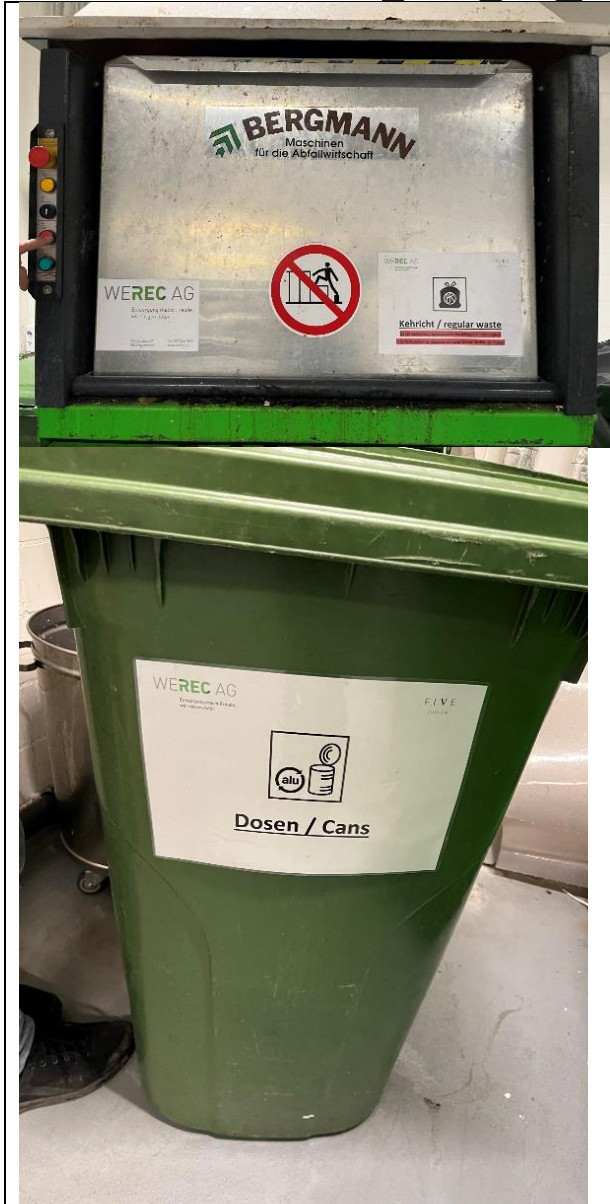


A fully integrated and specialized recycling system is in place to segregate and dispose of different waste materials

# FIVE ▶



# FIVE ▶



# FIVE ▶



# FIVE ▶



## Hazardous Waste Management

FIVE Palm Jumeirah

# FIVE ▶



Segregated chemical can disposal area is in place to ensure responsible management of hazardous waste



Paint Cannisters have a separate storage room

# FIVE ▶



Leak-safe chemical trays are in place to ensure environmental safety

**FIVE Jumeirah Village**

# FIVE ▶



Leak safe trays are in place for all hazardous chemicals

## FIVE Zurich



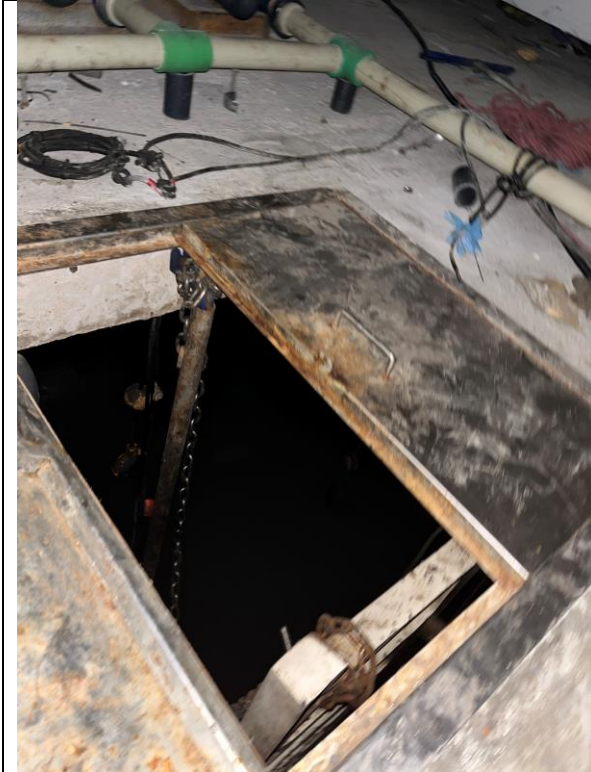
Leak Safe Boxes and Elevated Floor Platforms are provided for all chemical containers to minimize health and safety dangers. Suppliers collect empty chemical cannisters as part of the Swiss Law requirements.



# FIVE ►

## Wastewater Management

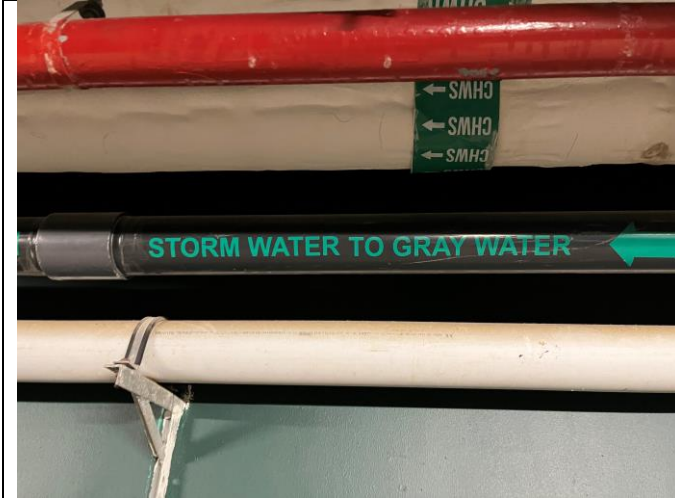
FIVE Palm Jumeirah



Greywater Holding Tank is in place, complete the the greywater filtering system



# FIVE ▶



Rainwater harvesting to graywater tank pipe is in place, providing integrated rainwater and graywater based irrigation



A grease trap/fat separator is in place which is collected by waste management company



Automatic chemical dosing system in Housekeeping department minimizes chemical usage, improving wastewater makeup

# FIVE ▶

FIVE Jumeirah Village



Irrigation water booster pumps in place (top) and site of future water pump (bottom) for distributing greywater to apartments landscaping.



# FIVE ►



Automatic chemical dosing system  
minimizes chemical usage and promotes  
safety

# FIVE ▶



Fat/Grease Separator system in place and collection record sheet

# FIVE ►

**GOVERNMENT OF DUBAI**  
بلدية دبي  
DUBAI MUNICIPALITY

بطاقة عمل  
مخلفات مصائد الدهون  
**JOB CARD**  
Grease Trap Waste

Facility Name/License No: **FIVE HOTEL JUMEIRAH VILLAGE / 1728658**  
العنوان: **JUMEIRAH VILLAGE CIRCLE**  
Contact Details: **042 488 005 - 052 237 7030**

رقم المخلفات Serial No.	التاريخ Date	رقم الكوبون Coupon No.	نوع و عدد مصائد الدهون Type & No. of Grease Trap & Tanks	كمية المخلفات المستلمة Amount of Waste Collected	شركة التنظيف Cleaning/Transporting Company Signature	موقع المصفاة Facility Address
1	19/2/23	1714282	C-3	405 كغ	CPRO	فندق فيف
2	20/2/23	1721745	C-3	405 كغ	CPRO	فندق فيف
3	9/3/23	1727797	C-3	405 كغ	CPRO	فندق فيف
4	19/3/23	1739815	C-3	405 كغ	CPRO	فندق فيف
5	29-03-23	1747182	C-3	405 كغ	CPRO	فندق فيف
6	7/4/23	1753737	C-3	405 كغ	CPRO	فندق فيف
7						
8						
9						
10						
11						
12						
13						
14						
15						
16						
17						

## FIVE Zurich

In FIVE Zurich, wastewater is collected directly by the Zurich City municipality. It is processed through the city's wastewater infrastructure and repurposed throughout the city. Accordingly, the hotel is billed for its wastewater generated and hence tracked and reported on by the Zurich City wastewater municipality.

